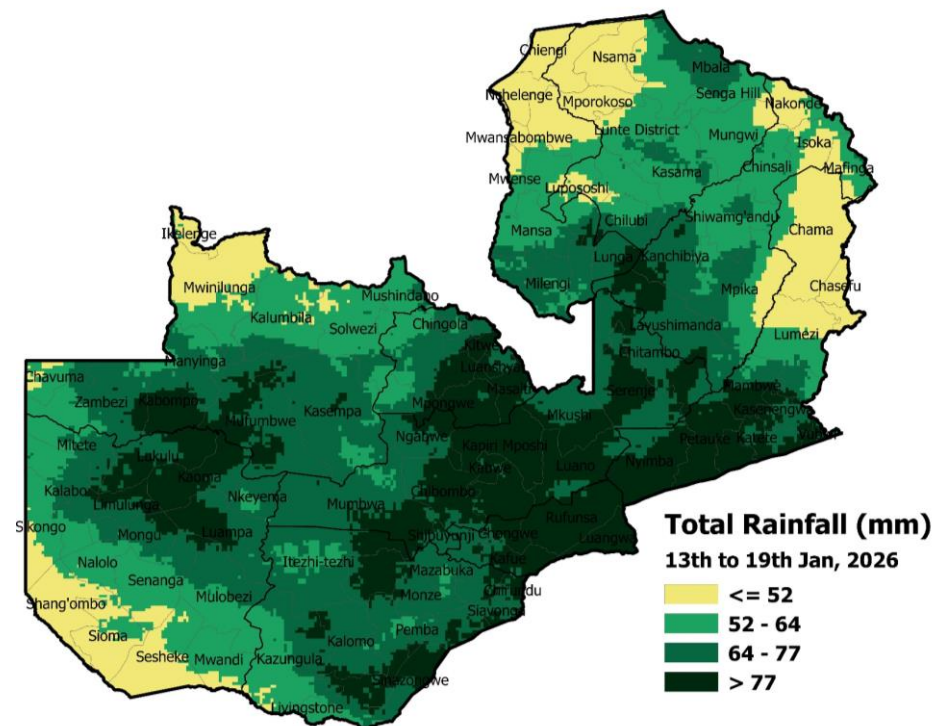


# Weekly Weather Bulletin

**Time Issued** 15:55 CAT; **Date Prepared:** 12<sup>th</sup> January, 2026; **Validity Period:** 13<sup>th</sup> to 19<sup>th</sup> January, 2026.

**SUMMARY:** *There is more than 90% chance of receiving over 50mm of rainfall over Central, Copperbelt, Lusaka, Northwestern and Southern including the southern parts of Eastern and the northern parts of Western provinces, while the rest of the country will have less than 60% chance of receiving more than 50mm of rainfall during the forecast period.*



**Figure 1: Forecasted total rainfall for the period 13<sup>th</sup> to 19<sup>th</sup> January, 2026**



Produced by the  
Zambia Meteorological Department  
Ministry of Green Economy and Environment

**PERIOD: 13<sup>TH</sup> TO 19<sup>TH</sup> JANUARY, 2026**

**CENTRAL, COPPERBELT, LUSAKA, NORTHWESTERN AND SOUTHERN PROVINCES INCLUDING THE SOUTHERN PARTS OF EASTERN AND THE NORTHERN PARTS OF WESTERN PROVINCES:**

**MORNINGS:** Mainly cloudy, windy at times and mild with rain at interval and occasional thunder. Minimum temperature will be ranging between 14°C and 20°C.

**AFTERNOONS:** Mainly cloudy, slightly windy and warm with rain and thunderstorms. Maximum temperature will be ranging between 26°C and 32°C.

**NIGHTS:** Mainly cloudy, windy at times and mild with isolated rain and occasional thunder.

**LUAPULA, MUCHINGA AND NORTHERN PROVINCES INCLUDING THE NORTHERN PARTS OF EASTERN AND THE SOUTHERN PARTS OF WESTERN PROVINCES:**

**MORNINGS:** Partly cloudy and mild to warm with isolated rain and occasional thunder. Minimum temperature will be ranging between 13°C and 21°C.

**AFTERNOONS:** Mainly cloudy, slightly windy and warm to hot with isolated showers and thunderstorms. Maximum temperature will be ranging between 27°C and 33°C.

**NIGHTS:** Mostly cloudy, windy at times with isolated rain and thunderstorms.

**ADVISORY:** *Farmers are advised to start planting other crops. Fertilizer application should be well managed to reduce leaching, while proper field drainage should be maintained in high-rainfall areas. The public is advised to avoid sheltering under trees or parking vehicles beneath them due to expected storms.*

**Stay safe and stay updated with the latest weather forecast and advisories.**