



Republic of Zambia
Ministry of Green Economy and Environment
Zambia Meteorological Department

Period: 21st– 31st March 2026

Issue No. 14

Season: 2025/2026

Agro Meteorological Bulletin

Highlights

WEATHER UPDATE

- Zambia continues to record **normal to above-normal rainfall**.
- Soil moisture remains **highly saturated (90% to 100%)** across most parts of the country.
- Significant rainfall activities to be confined to the northern parts of Zambia.
- Localized **waterlogging, flash floods, and flooding** may occur, particularly in flood-prone areas, due to saturated soil moisture

ACTION ITEMS FOR CROP FARMERS

- Farmers advised to **improve field drainage systems** to reduce the risk of waterlogging, root rot and crop damage from excess rainfall.
- Reduce the risk of in-field flooding by allowing excess water to flow away;
- **Regularly scout** for pests and diseases that thrive in wet conditions;
- **Inspect fields** for signs of fungal diseases, which are more common during wet periods;
- **Prepare** and **secure storage facilities** to minimize post-harvest losses from moisture and pests;
- **Support maize cobs** that do not droop at maturity to prevent water from entering the cobs.
- **Prepare nurseries** for irrigated crops to take advantage of the extended moisture period.



Republic of Zambia
Ministry of Green Economy and Environment
Zambia Meteorological Department

Period: 21st– 31st March 2026

Issue No. 14

Season: 2025/2026

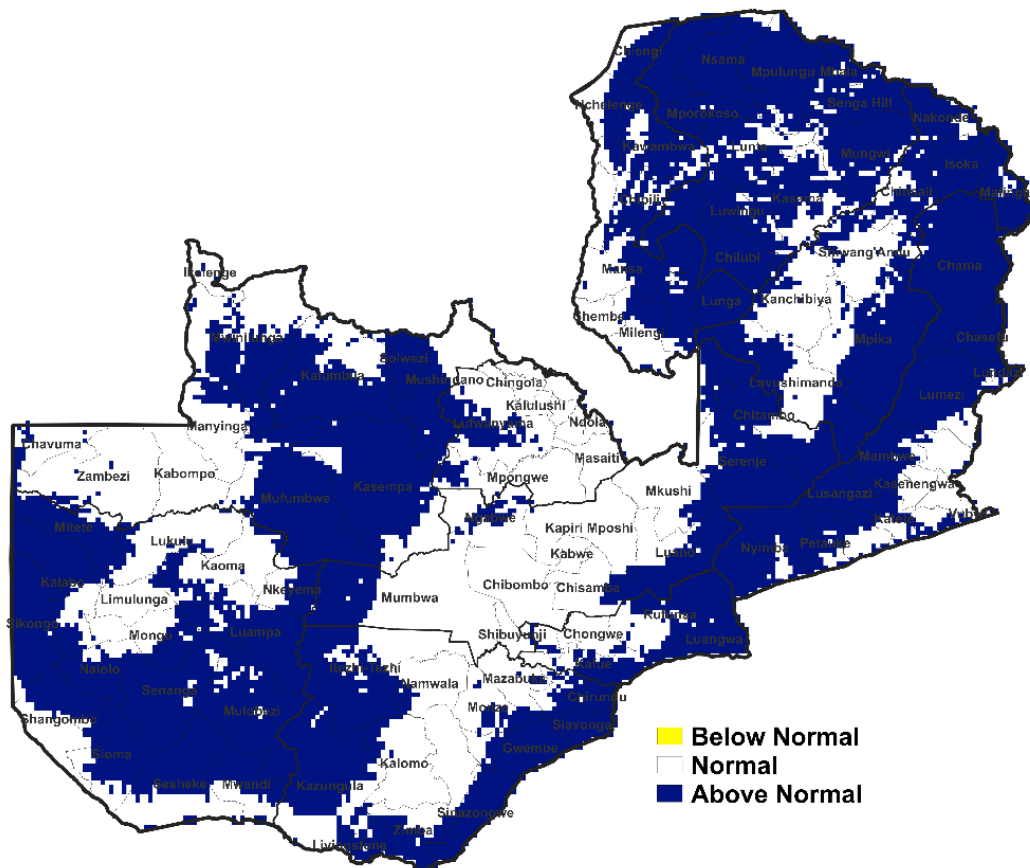


Figure 1: Rainfall Departure from Normal

Period: 1st October to 31st March, 2026

RAINFALL PERFORMANCE

Dekadal Rainfall performance

Period: 21st – 31st March, 2026

During the period from 21st to 31st March, rainfall activity was concentrated in the northern parts of the country, while the rest of the country experienced isolated rainfall. This was due to the weak Inter-Tropical Convergence Zone, which oscillated mostly over the northern regions.

In addition, satellite observations for the third dekad of March indicate that much of Western, Southern, Central, Lusaka, and Muchinga Provinces, including the northern parts of Eastern Province and areas around Kambopo, Mufumbwe, Kasempa, Mpongwe, Masaiti, and Ndola Districts, received rainfall totals of 15 mm to 60 mm, while the rest of the country, especially the northern parts, recorded amounts exceeding 60 mm (green shades).

Across meteorological stations, Kawambwa and Mansa Met reported the highest rainfall of 138 mm, followed by Solwezi at 132 mm, while Lundazi recorded the lowest with less than 1 mm. (See figure 2 & Table 1).

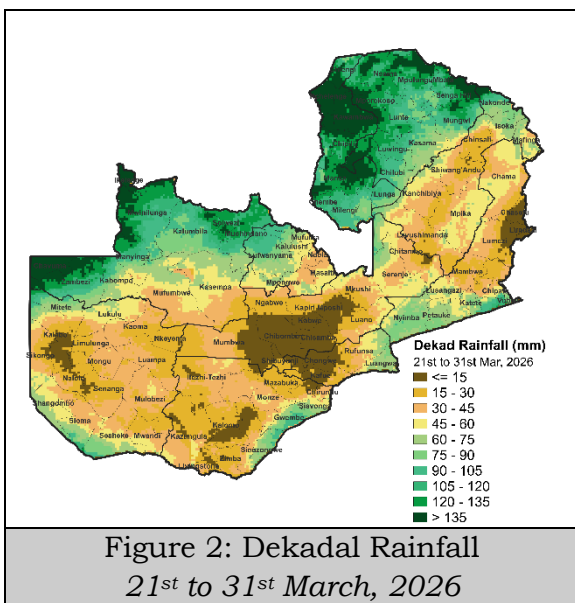


Figure 2: Dekadal Rainfall
21st to 31st March, 2026

Dekadal Rainfall Anomaly:

Period: 21st – 31st March, 2026

The rainfall anomaly for the third dekad of March indicates rainfall deficits ranging from 20 mm to 40 mm over much of Western, Southern, Central and Muchinga Provinces, including the eastern parts of Copperbelt Province and the northeastern districts of Eastern Province (brown shades). The rest of the country, especially the northern regions, recorded surpluses exceeding 10 mm (green shades). (See figure 3 & Table 1).

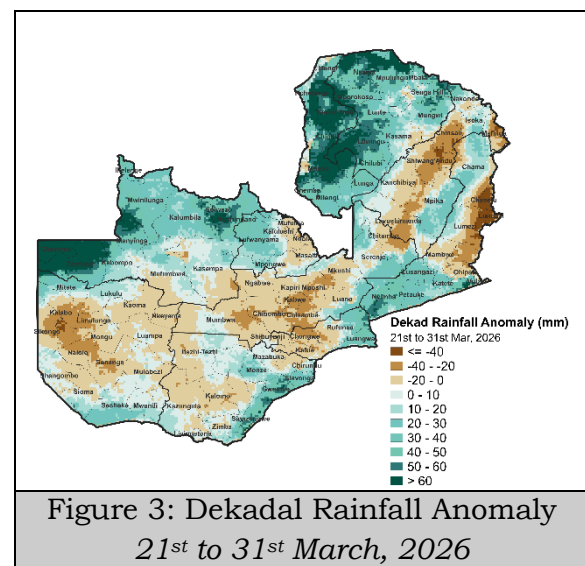


Figure 3: Dekadal Rainfall Anomaly
21st to 31st March, 2026

Rain-days:

Period: 21st – 31st March, 2026

The rainfall distribution for the period 21st to 31st March, 2026 indicates that most parts of the country recorded at least four (4) or more rain days, except for much of the Southern and Lusaka Provinces, as well as the western parts of Central Province and the southern districts of Western Province, which mostly experienced less than 4 rain days.

Misamfu recorded the highest number of rain days at 11, while the lowest number was 1 day, recorded in Mumbwa. (See figure 4 & Table 1).

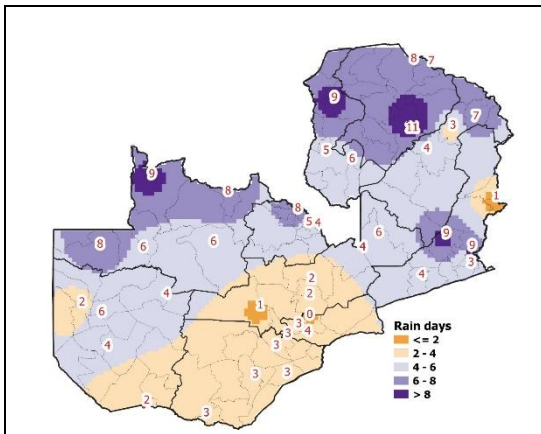


Figure 4: Number of Rain Days
21st to 31st March, 2026

Cumulative Rainfall since start of season

Period: 1st October to 31st March, 2026

Since the start of the 2025/26 rainfall season, cumulative rainfall totals have exceeded 1,100 mm (green shades) in most parts of the country. However, much of the Western and Southern Provinces, as well as the western parts of Central Province and areas around Kabompo, Mpongwe, Masaiti, Lavushimanda, and Kanchibiya districts, have recorded totals ranging from 800 mm to 1,100 mm.

Among the meteorological stations, Mbala recorded the highest cumulative rainfall at 1,976 mm, followed by Kasempa with 1,701 mm, while the lowest amount was recorded at Ndola, with 715 mm. **(See figure 5 & Table 1).**

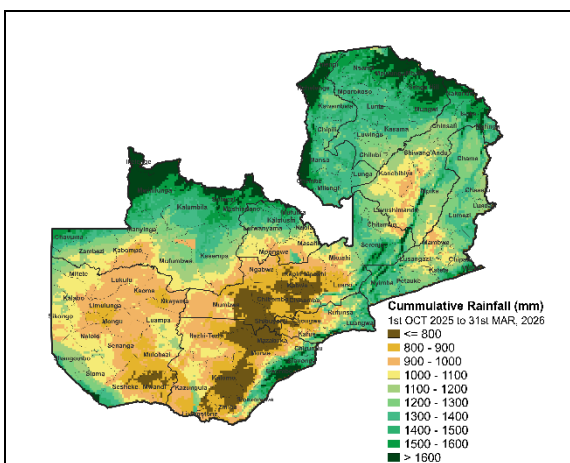


Figure 5: Cumulative Rainfall
1st October to 31st March, 2026

Rainfall Departure:

Period: 1st October to 31st March, 2026

Rainfall departure indicates normal to above normal conditions across the country since the start of the 2025/26 rainfall season.

Cumulative rainfall since the start of the season shows that most areas have received surplus rainfall exceeding 170 mm above what is normally received (green shades). However, localised deficits of 20 mm to 40 mm have been recorded in a few isolated areas, most notably over Ndola and Masaiti districts (brown shades) **(See Figure 1, 6 & Table 1).**

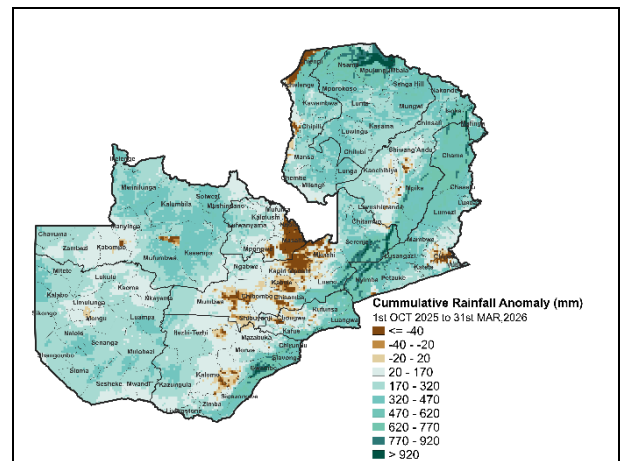


Figure 6: Rainfall Anomaly
1st October to 31st March, 2026

10-DAY WEATHER FORECAST

General Situation

1st to 10th April, 2026

There is more than 70% chance of recording rainfall exceeding 50mm over the northern districts of Luapula, Northern and Muchinga Province, while the rest of the country will have less than 20% chance of receiving more than 50mm of rainfall during the forecast period.

Detailed Forecast:

Period: 1st to 6th April, 2026

Northwestern, Copperbelt, Luapula, Northern and Muchinga Provinces

including the northern districts of Eastern and Western provinces.

Mornings: Mainly cloudy, slightly windy and mild with isolated rain and occasional thunder. Minimum Temperature will be in the range of 11°C to 19°C

Afternoons: Mainly cloudy and warm to hot with showers and thunderstorms. The maximum temperature will be in the range of 23°C to 32°C

Nights: Partly cloudy and mild with isolated rain and thunder.

Southern, Lusaka and Central Provinces, including the southern districts of Eastern and Western Provinces.

Mornings: Few clouds, windy at times, and mild, tending to be partly cloudy by late Morning. Minimum temperature will be in the range 13°C to 17°C

Afternoons: Partly cloudy and warm to hot with isolated showers. The maximum temperature will be in the range of 25°C to 33°C

Nights: Few clouds, slightly windy and mild.

7th to 10th April, 2026

Northwestern provinces, including the northern districts of Copperbelt, Luapula, Northern, Muchinga and Western Provinces.

Mornings: Partly cloudy, windy at times, and mild, tending to be cloudy in some areas with a chance of isolated rain. Minimum Temperature will be in the range of 14°C to 19°C.

Afternoons: Mainly cloudy and warm to hot with isolated showers and thunderstorms. The maximum temperature will be in the range of 24°C to 32°C

Nights: Partly cloudy and mild with isolated rain and thunder

Southern, Lusaka, Central and Eastern Provinces, including the southern districts of Copperbelt, Luapula, Northern Muchinga and Western Provinces.

Mornings: Few clouds, windy at times, and mild, tending to be partly cloudy by late Morning. Minimum temperature will be in the range 13°C to 17°C

Afternoons: Partly cloudy and warm to hot with a chance of isolated showers. The maximum temperature will be in the range of 26°C to 33°C

Nights: Mainly clear skies, slightly windy, and mild.

The forecast rainfall map for the period 1st to 10th April, 2026 indicates that Northwestern, Luapula and Northern Provinces including the northern parts of Muchinga province to receive rainfall amounts between 46 mm and 81 mm, with areas in deep green to receive rainfall amounts greater than 93 mm, while Western, Southern, Lusaka, Central and Eastern Provinces including the southern parts of Muchinga to receive rainfall amounts between 13 and 23 mm, with areas in deep brown to receive rainfall amounts less than 12mm (**See Figure 7**).

AGRO-METEOROLOGY CONDITIONS
Soil Water Index

The Soil Water Index predominantly indicates sufficient soil moisture (90–100%) across the country, with a few areas around Sinazongwe, Gwembe, Siavonga, Chirundu, Mazabuka, Shibunyunji and Luangwa districts showing satisfactory moisture levels (50–90%).

The forecast for the next 10 days indicates that rainfall will be confined to the northern parts of the country, while the rest of the country may experience isolated events. Therefore, less intense or localized flash floods and waterlogging may occur, particularly in flood-prone areas, due to the high soil saturation levels observed during the third dekad of March. *(figure 9).*

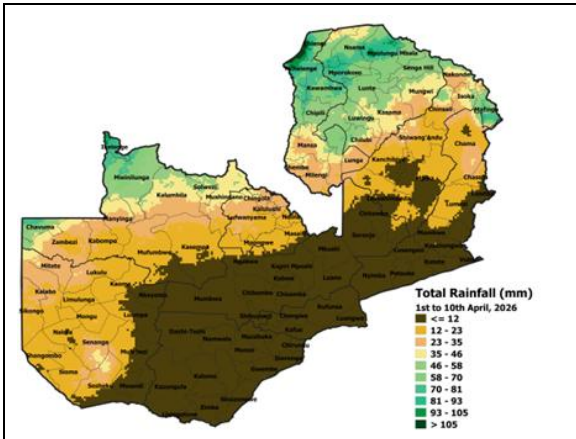


Figure 7: Forecast Rainfall
 1st to 10th April, 2026

The forecast rainfall anomaly map for the period 1st to 10th April, 2026, which compares expected rainfall against the 30-year long-term average; indicate that above-average rainfall is expected over Northwestern province including the northern parts of Copperbelt, Luapula and Northern provinces; with some areas in Northwestern, Luapula and Northern shaded in deep green expected to receive rainfall greater than 41 mm above average. While Western, Southern, Lusaka, Central, Copperbelt and Eastern Provinces including the southern parts of Muchinga province, are expected to record a deficit, with areas in deep brown to receive rainfall amounts less than 20 mm below average. *(See Figure 8).*

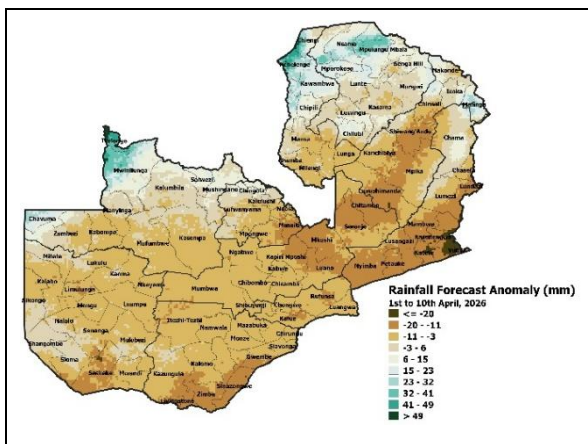


Figure 8: Forecast Rainfall Anomaly
 1st to 10th April, 2026

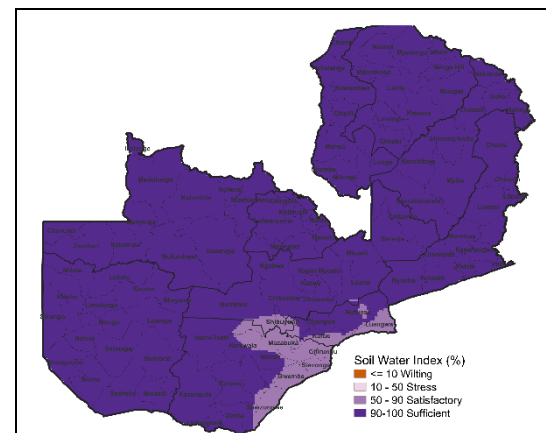


Figure 9: Soil Water Index
 As of 31st March, 2026

The Soil Water Index quantifies the moisture conditions at various depths in the soil and is mainly driven by rainfall infiltration, penetration and surface water evaporation processes.

Advisories on crops

Farmers are encouraged to improve field drainage systems to reduce the risk of waterlogging, root rot, and crop damage from excess rainfall.

Open up beds at the end of fields to allow passage of excess water away from the fields to reduce risk of infield flooding.

Farmers should continue regular scouting of crops for pests and diseases favoured by high moisture. inspect fields for signs of fungal diseases, which are more common in wet conditions

Farmers who planted early should begin preparing and securing storage facilities. Proper storage helps minimize post-harvest losses due to moisture and pests.

Maize varieties that do not droop at maturity should be assisted by drooping cobs to minimise water entering into the inside of the cobs.

To benefit from extended moisture period farmers should start preparing for irrigated crop to plant nursery.

Stay updated on the latest weather forecasts and adjust farming practices accordingly.

For any unusual, strange insects or disease on crops, report to the nearest Agricultural Office in your area.

For any further information, farmers can contact their local District

Agricultural Coordinators' (**DACO**) office or Ministry of Agriculture field officers

The Agrometeorological Bulletin is a collaborative production of the Ministry of Agriculture, and the Ministry of Green Economy and Environment.

Table 1

Period: 21 st – 31 st March, 2026				Issue No: 14 Season: 2025/2026				
Station	Dekad Observations			Total Since 1 st October 2025				
	Rainfall mm	Rain days (>=1mm)	Normal Dekadal Rainfall (mm)	Cumulative Rainfall (mm)	Cumulative Rain days	Normal Cumulative Rainfall (mm)	Rainfall Departure (mm)	Percentage Departure %
Northern Province								
Mbala	97	7	78	1976	88	1048	928	88
Kasama	70	9	72	1332	98	1151	181	16
Misamfu	86	11	78	1605	102	1168	438	37
Mpulungu	49	8	78	1668	84	1048	620	59
Luapula Province								
Kawambwa	138	9	89	1290	100	1085	205	19
Mansa Met	138	5	67	1380	97	1054	326	31
Muchinga Province								
Mpika	33	4	48	1097	84	961	136	14
Isoka	54	7	52	1388	82	928	460	50
Chinsali	11	3	52	1289	87	928	361	39
Copperbelt Province								
Ndola	25	4	53	715	61	1118	-403	-36
SMKIA	34	5	53	1384	99	1118	266	24
Kafironda	57	8	61	1423	100	1219	204	17
North Western Province								
Mwinilunga	114	9	80	1469	113	1170	298	25
Zambezi	130	8	49	1204	84	950	254	27
Kasempa	72	6	57	1701	108	1009	691	68
Kabompo	43	6	51	1192	85	924	268	29
Solwezi	132	8	77	1681	109	1182	499	42
Eastern Province								
Msekera	26	3	49	1007	76	937	69	7
Chipata	34	9	47	1217	91	1043	174	17
Lundazi	1	1	49	1195	75	795	400	50
Mfuwe	27	9	37	945	86	744	201	27
Petauke	65	4	43	1074	72	892	182	20
Central Province								
Serenje	48	6	47	1255	90	961	293	31
Mkushi	43	4	70	1362	106	927	435	47
Kabwe Agro	6	2	31	623	71	832	-209	-25
Kabwe Met	3	2	31	896	68	832	64	8
Lusaka Province								
KKIA	0	0	24	697	58	761	-64	-8
Lusaka City	6	4	26	969	79	764	205	27
Mt Makulu	9	3	29	879	75	787	93	12
Western Province								
Kalabo	6	2	39	983	77	728	256	35
Mongu	33	6	49	1059	84	867	193	22
Kaoma	23	4	36	1030	82	822	208	25
Senanga	11	4	34	1231	95	662	569	86
Sesheke	63	2	30	862	67	576	287	50
Southern Province								
Kafue Polder	36	3	17	734	60	616	118	19
Livingstone	29	3	25	763	80	602	160	27
Magoye	21	3	27	791	66	702	90	13
Choma	15	3	27	780	64	733	47	6
Chipepo	105	3	20	1208	59	770.3	438	57